

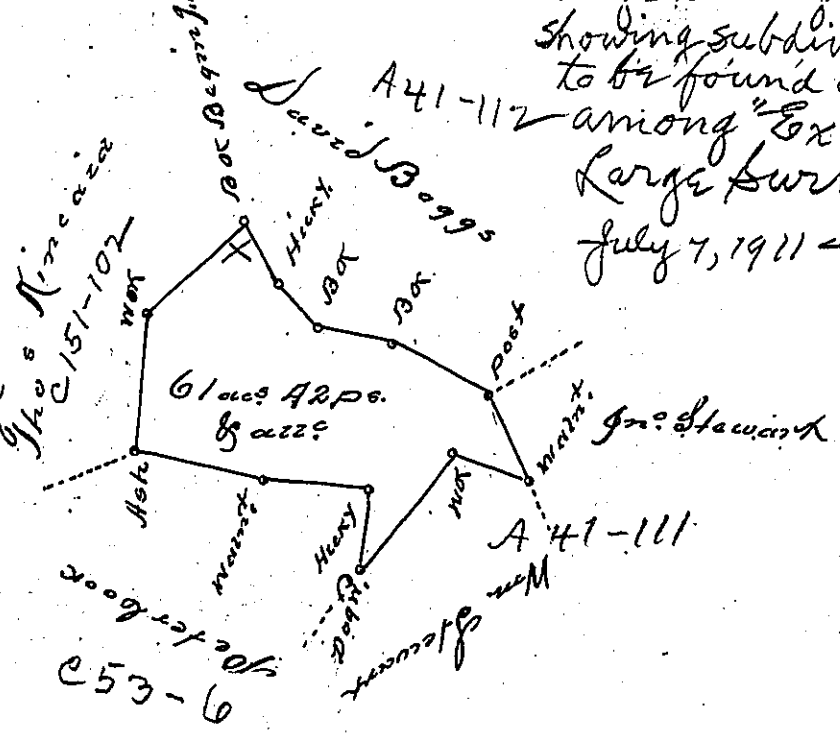
see BB2-36

Alleg 60  
5115-114 X (333) 240

511 H70-285  
H73-337  
401  
402

Courses & distances of Wm  
Henderson's Survey, Begin<sup>n</sup>,  
at a Black Corner to the  
Kincaid Distance.

- S<sup>o</sup> 21<sup>o</sup> E. 23 p<sup>o</sup> a Hick.
  - S<sup>o</sup> 45<sup>o</sup> E. 31 do Box
  - S<sup>o</sup> 81<sup>o</sup> E. 33 do Box
  - S<sup>o</sup> 63<sup>o</sup> E. 49 do Post
  - S<sup>o</sup> 25<sup>o</sup> E. 34 do Walnut
  - N<sup>o</sup> 68<sup>o</sup> W. 38 do W<sup>o</sup>K
  - S<sup>o</sup> 39<sup>o</sup> W. 66 do Dog<sup>o</sup>W
  - N<sup>o</sup> 9<sup>o</sup> E. 36 do Hick.
  - N<sup>o</sup> 85<sup>o</sup> W. 49 do Walnut
  - N<sup>o</sup> 78<sup>o</sup> W. 56 do Ash
  - N<sup>o</sup> 5<sup>o</sup> E. 60 do a W<sup>o</sup>K
  - N<sup>o</sup> 5<sup>o</sup> E. 56 do a Box
- at the Begin<sup>n</sup>.



for parts of this.  
Large Survey (A605-114)  
Showing subdivisions  
to be found on file  
among "Extra  
Large Surveys"  
July 7, 1911 - Book

The Draught of a Survey call'd the Hermitage, Situate on the waters of  
Saw Mill run in Allegheny County, Containing 61 acs 42 ps. of the  
usual azz<sup>d</sup> for Roads &c. Executed June the 28<sup>th</sup> 1792. In pursuance  
of a warrant granted to Wm Henderson for 60 acres dated Feb<sup>y</sup>  
9<sup>th</sup> 1791.

Presley Nevill D.D.

detained in my Office hitherto on acc<sup>t</sup> of a dispute with John  
Stewart which is not yet settled. Jan<sup>y</sup> 2<sup>o</sup> 1806

P. Nevill D<sup>r</sup>

Saml Beckwith Esq

IN TESTIMONY that the above is a copy of the original remaining on file in  
the Department of Internal Affairs of Pennsylvania, made  
conformably to an Act of Assembly approved the 16th day of  
February, 1833, I have hereunto set my Hand and caused  
the Seal of said Department to be affixed at Harrisburg,  
this twenty fifth day of May 1905,

Isaac R Brown  
Secretary of Internal Affairs.